

NOTES:

- 1. MATL. TO BE 304 L FOR ITEMS 1,2,3,4,6,7A,7B & 9.
- 2. INVESTMENT CASTING/MIL-C-6021E CL-28 OF CERTIFIED ALLOYS.
- 3. "ZYGO" INSPECTION PER 1686.

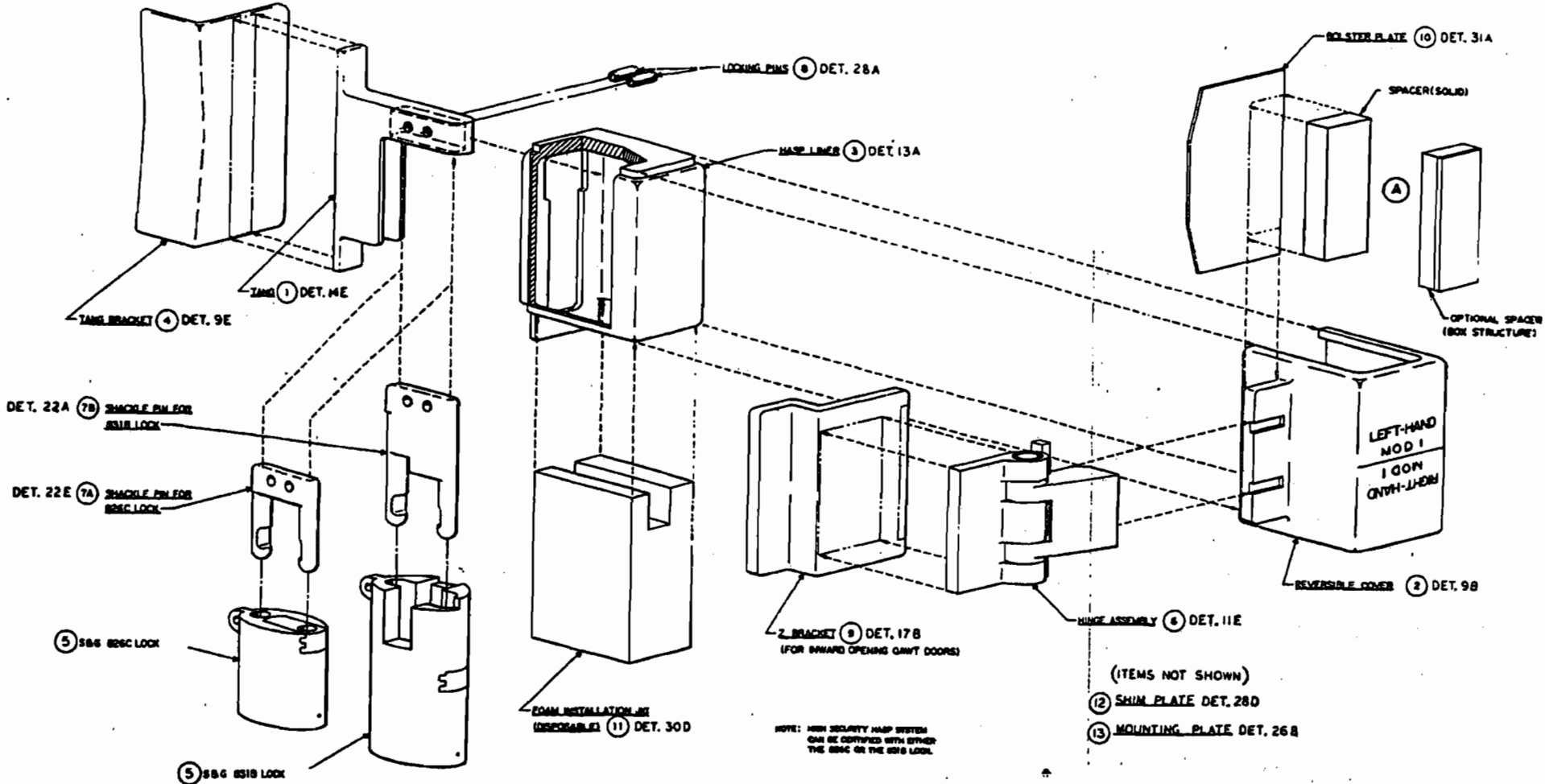


FIGURE 1. High security hasp, shipboard configuration and parts list.